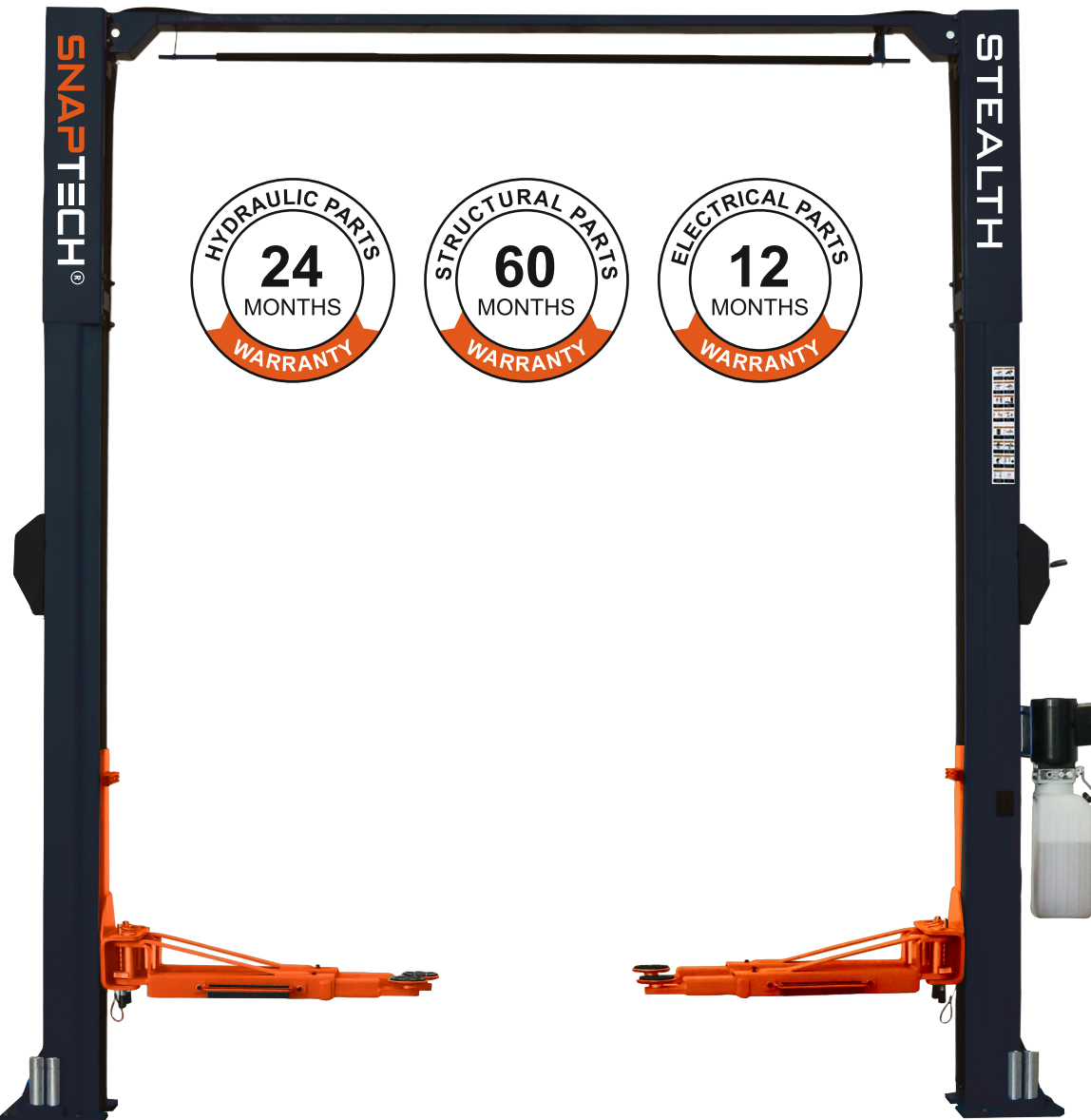




# SNAPTECH®



TWO POST BASE FREE LIFT

ST

STEALTH

## FEATURES

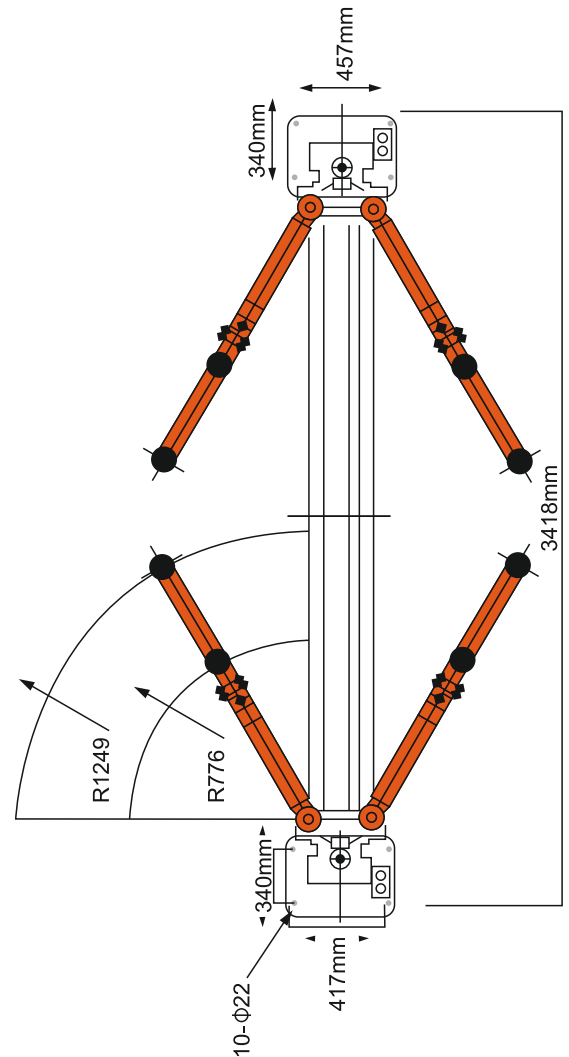
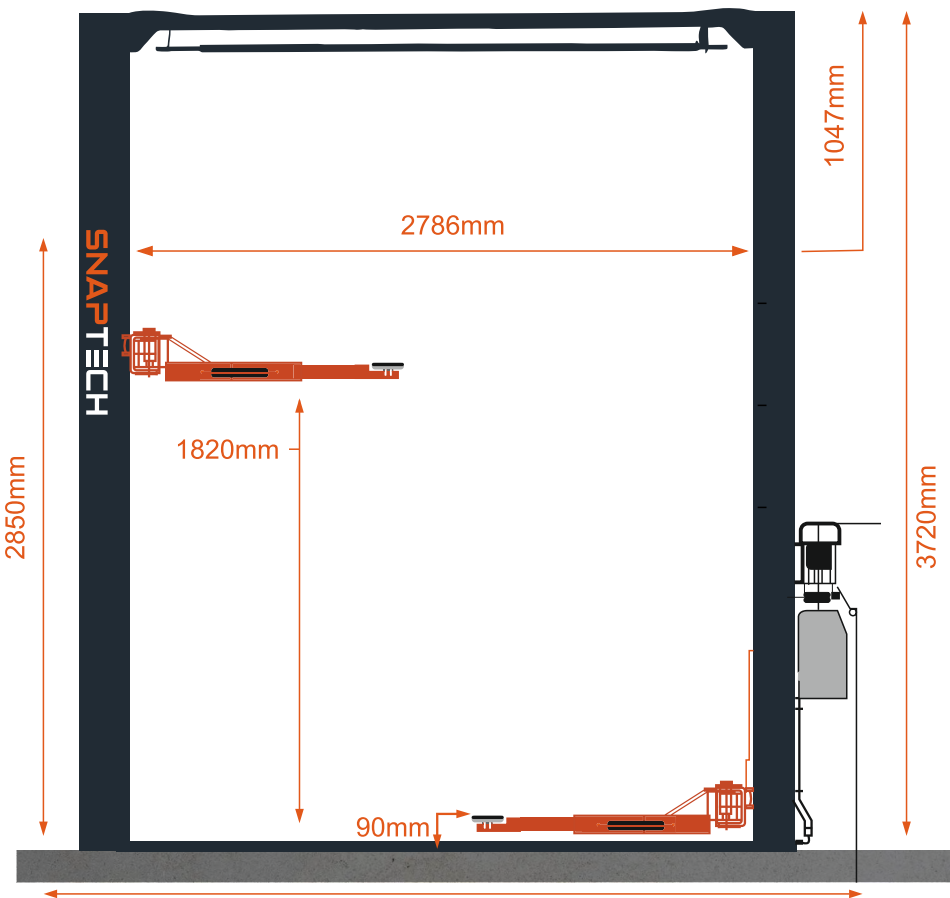
- Revolutionary 8 bend columns for increased strength
- Two-sided manual lock release system
- Integrated 14mm one piece carriage
- Dual safety cables to maintain balance and safety
- Premium 2.2KW power unit for reliability
- CE approval for European standards
- Precision machined arm locking device for safe lifting

## SPECIFICATIONS

MODEL NO	STEALTH
LIFTING CAPACITY	4.0T
MAX LIFTING HEIGHT	1820mm
MINIMUM HEIGHT	95mm
LIFTING TIME	<50s
OVERALL WIDTH	3410mm
OVERALL HEIGHT	3720mm
MOTOR VOLTAGE	220V
MOTOR POWER	2.2KW
PACKAGE SIZE	2960x465x735mm



## DIMENSIONS



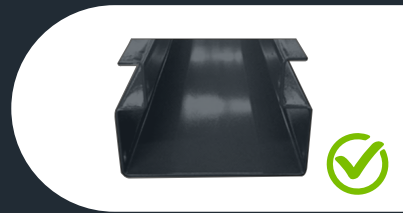
## DESCRIPTION

## SNAPTECH

## OTHERS

### 1. Column

We incorporate a revolutionary Double "S" Column design also known as an 8 bend design. These bends double the strength in a post



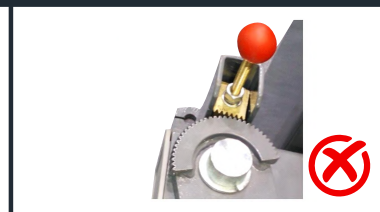
### 2. Carriages

One piece 14mm steel carriages to eliminate sagging and wear



### 3. Arm Locks

Our arm lock are Precision milled with state of the art mil spec steel to ensure a safe and effective locking mechanism every time.



### 4. Stronger and lower arms

Our arms are thicker yet lower than the competition to ensure they don't bend under weight and also to fit under low vehicles.



### 5. Sliders and Pulleys

Pulleys have a very high stress point due to its small contact points to both the surface of the pulley and the surface that is being rolled.

The slider blocks make contact on a much larger surface of the post and for greater stability on the carriage as it travels inside the post. The larger contact area created by the slider block prevents twisting and play on the carriage

